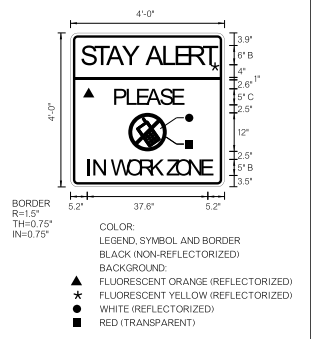
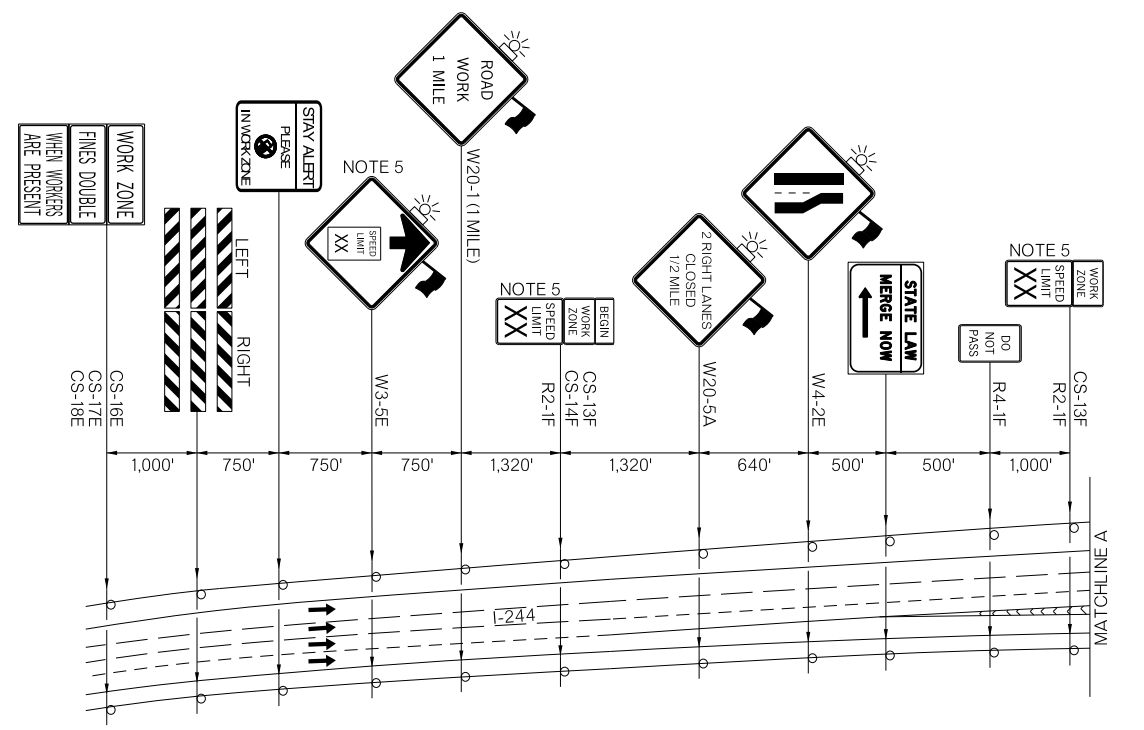


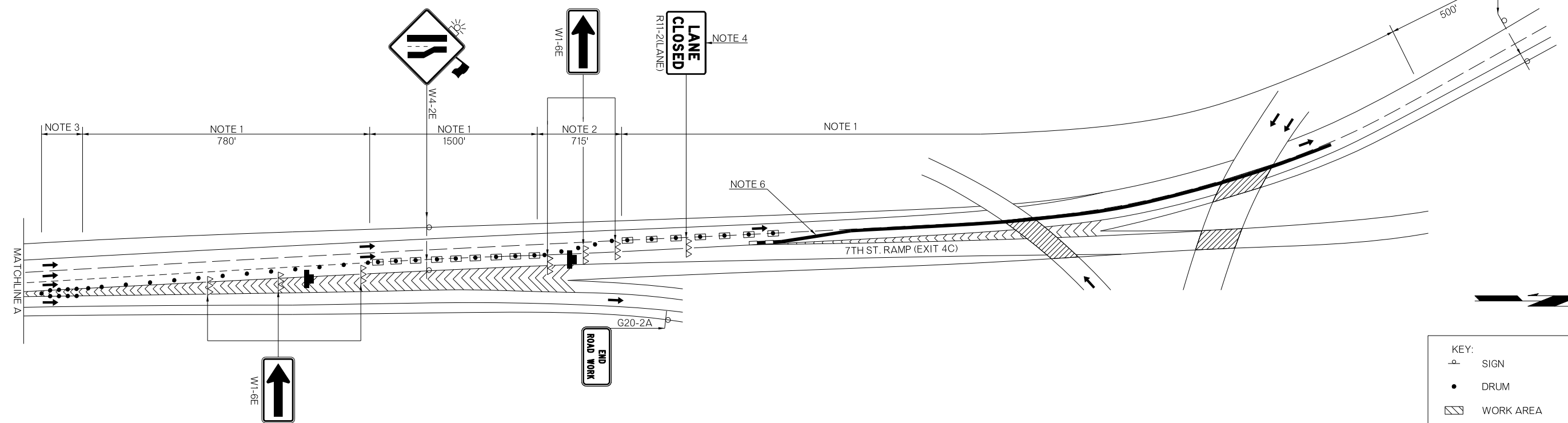
REVISIONS		
REV. NO.	DESCRIPTION	DATE

CLOSURE OF THE 7TH ST. RAMP (EXIT 4C) WILL BE ALLOWED FROM FRIDAY 5:00 PM TO MONDAY 6:00 AM TO PAINT SECTIONS OVER 7TH ST. RAMP (EXIT 4C)



BORDER
R=1.5"
TH=0.75"
IN=0.75"

COLOR:
LEGEND, SYMBOL AND BORDER
BLACK (NON-REFLECTORIZED)
BACKGROUND:
▲ FLUORESCENT ORANGE (REFLECTORIZED)
★ FLUORESCENT YELLOW (REFLECTORIZED)
● WHITE (REFLECTORIZED)
■ RED (TRANSPARENT)



NOTE 1
MAXIMUM SPACING BETWEEN CHANNELIZING DEVICES (FEET) SHALL BE EQUAL TO THE POSTED SPEED LIMIT (M.P.H.) WITH THE FOLLOWING EXCEPTIONS. SPACING SHALL NOT EXCEED 50 FEET FOR CONES OR TUBE CHANNELIZERS; IT SHALL NOT EXCEED 75 FEET FOR CHANNELIZER CONES; IT SHALL NOT EXCEED 100 FEET FOR TYPE II BARRICADES, VERTICAL PANELS OR DRUMS.

NOTE 2
MAXIMUM SPACING BETWEEN CHANNELIZING DEVICES (FEET) SHALL BE EQUAL TO THE POSTED SPEED LIMIT (M.P.H.) WITH THE FOLLOWING EXCEPTIONS. SPACING SHALL NOT EXCEED 25 FEET FOR CONES OR TUBE CHANNELIZERS; IT SHALL NOT EXCEED 50 FEET FOR TYPE II BARRICADES, VERTICAL PANELS OR DRUMS.

NOTE 3
A MINIMUM OF FIVE (5) CHANNELIZING DEVICES SHALL BE PLACED THROUGH THIS TAPER.

NOTE 4
TYPE III BARRICADES WITH SIGNS READING "LANE CLOSED" (R11-2) SHALL BE PLACED EVERY 2,000 FEET THROUGH ACTIVITY AREA. THESE TYPE III BARRICADES AND SIGNS MAY BE OMITTED ON MOVING OPERATIONS AND SHORT DURATION PROJECTS.

NOTE 5
CONSTRUCTION SPEED LIMIT SHALL BE DETERMINED BY THE DIVISION ENGINEER.

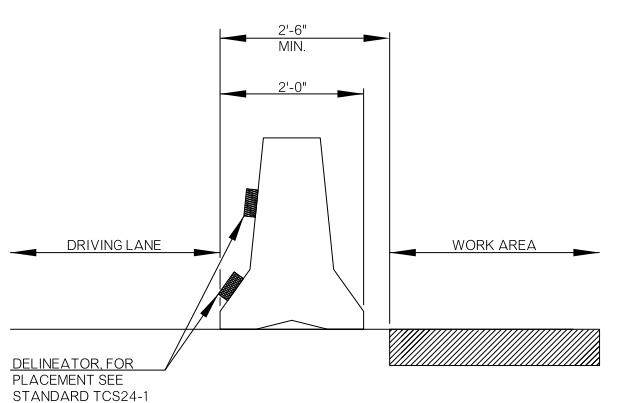
FOR ADDITIONAL INFORMATION ABOUT TAPER LENGTHS AND SPACING OF CHANNELIZING DEVICES, SEE STANDARD DRAWING TCS2-1-(LATEST REVISION).

NOTE 6

FLARE RATES FOR CONCRETE MEDIAN BARRIER IN TEMPORARY TRAFFIC CONTROL ZONES

SPEED *	FLARE RATE (MINIMUM)
40 M.P.H.	9 TO 1
45 M.P.H.	10 TO 1
50 M.P.H.	11 TO 1
55 M.P.H.	12 TO 1
60 M.P.H.	13 TO 1
65 M.P.H.	14 TO 1
70 M.P.H.	15 TO 1
75 M.P.H.	16 TO 1

* POSTED SPEED LIMIT PRIOR TO CONSTRUCTION



KEY:

- SIGN
- DRUM
- ▨ WORK AREA
- ➔ ARROW DISPLAY
- △△△ TYPE III BARRICADES
- CHANNELIZER CONE
- ▬ CONST. ZONE IMPACT ATTENUATOR
- ▬ PORTABLE LONGITUDINAL BARRIER

NOT TO SCALE

TRAFFIC CONTROL DETAIL (BRIDGES E & F)

Drawn	JF	6/16
Design	JF	6/16
Checked	SEB	6/16

TRAFFIC ENGINEERING
JAMI SHORT

STATE OF OKLAHOMA | DEPARTMENT OF TRANSPORTATION

DIVISION 8 | JOB/PIECE NO. 30318(06) | SHEET NO. T004

TULSA COUNTY/